

BLDC Control Demo User's Guide

1. Introduction

This document provides instructions for running and controlling the Brushless DC (BLDC) sensorless application with the Freedom and Tower System development boards shown in [Table 1](#).

The required software, hardware setup, jumper settings, project arrangement, and user interface is described in the following sections. For more information, see [Section 9, “References”](#) or visit www.nxp.com/motorcontrol_bldc.

Contents

1.	Introduction	1
2.	Supported development boards.....	2
3.	Motor Control vs. SDK Peripheral Drivers	2
4.	Hardware setup.....	2
4.1.	Linux 45ZWN24-40 motor.....	3
4.2.	MIGE 60CST-MO1330 motor	3
4.3.	Tower System.....	4
4.4.	Tower System assembly	8
4.5.	Freedom development platform.....	9
4.6.	High-Voltage Platform	15
5.	Project file structure.....	15
6.	User Interface	17
6.1.	Control button.....	17
6.2.	Remote control using FreeMASTER.....	17
7.	Instructions	21
7.1.	Running the motor	21
7.2.	Stopping the motor	21
7.3.	Clearing a fault	21
7.4.	Turning on demonstration mode.....	21
8.	Acronyms and abbreviations	21
9.	References	22
10.	Revision history.....	22

2. Supported development boards

There are three supported development boards with two Kinetis KV series motor-control MCUs for motor-control applications. The development boards and supported MCUs are shown in [Table 1](#). The Tower System modular development platform and the Freedom development platform are targeted for low-voltage and low-power applications with BLDC control type. The High-Voltage Platform (HVP) is designed to drive high-voltage (115/220 V) applications with up to 1 kW of power.

Table 1. Supported development boards

—		Platform		
		FRDM	TWR	HVP
Power stage		FRDM-MC-LVBLDC	TWR-LV3PH	HVP-MC3PH
MCU	KV11	FRDM-KV11Z	—	—
	KV31	FRDM-KV31F	—	HVP-KV31F512
	KV46	—	TWR-KV46F150M	HVP-KV46F150
	KV58	—	TWR-KV58F220M	HVP-KV58F220M
	KE15Z	FRDM-KE15Z	—	—
	KE18F	—	TWR-KE18F	HVP-KE18F
	KE16Z	FRDM-KE16Z	—	—

3. Motor Control vs. SDK Peripheral Drivers

The motor-control examples use the SDK peripheral drivers to configure the general peripherals (such as clocks, SPI, SIM, and ports). However, motor control requires critical application timing because most control algorithms run in a 50- μ s loop. To optimize the CPU load, most peripheral-hardware features are implemented for the PWM signal generation, analog signal sampling, and synchronization between the PWM and ADC units.

The standard SDK peripheral drivers do not support the configuration and handling of all required features. The motor-control drivers are designed to configure the critical MC peripherals (eflexPWM, FTM, ADC, and PDB).

It is highly recommended not to modify the default configuration of the allocated MC peripherals due to a possible application-timing conflict. The particular `mcdrv_<board&MCU>.c` source file contains configuration functions of allocated peripherals.

4. Hardware setup

The BLDC sensorless application runs on Tower System and Freedom development platforms with a default 24-V Linux motor.

4.1. Linix 45ZWN24-40 motor

The BLDC sensorless application uses the Linix 45ZWN24-40 motor described in [Table 2](#). The motor can be used with the Tower System or Freedom development platforms.

Table 2. Linix 45ZWN24-40 motor parameters

Characteristic	Symbol	Value	Units
Rated Voltage	V_t	24	V
Rated Speed @ V_t	—	4000	RPM
Rated Torque	T	0.0924	Nm
Rated Power	P	40	W
Continuous Current	I_{cs}	2.34	A
Number of Pole Pairs	pp	2	—



Figure 1. Linix motor 45ZWN24-40

The motor has two types of cable connectors. One cable has three wires and it is designated to power the motor. The second cable has five wires and it is designated for the Hall sensors signal sensing. Only the power input wires are needed for the BLDC sensorless application.

4.2. MIGE 60CST-MO1330 motor

The MIGE 60CST-MO1330 motor (described in [Table 3](#)) is primarily used for the Permanent Magnet Synchronous Motor (PMSM) sensorless application but you can also use it for the BLDC sensorless application. You can also adapt the application to other motors by defining and changing the motor-related parameters. The motor is connected directly to the high-voltage development board via a flexible cable connected to the 3-wire development board connector.

Table 3. MIGE 60CST-MO1330 motor parameters

Characteristic	Symbol	Value	Units
Rated voltage	V_t	220	V
Rated speed @ V_t	—	3000	RPM
Rated power	P	400	W
Number of pole pairs	Pp	4	—



Figure 2. MIGE motor

4.3. Tower System

To run the BLDC application using the Tower System, these Tower boards are required:

- Tower board with a Kinetis V series MCU ([TWR-KV46F150M](#) or [TWR-KV58F220M](#)).
- Tower board with Kinetis E series MCU ([TWR-KE18F](#)).
- 3-Phase Low-Voltage Motor Control module (see [TWR-MC-LV3PH](#)) including the Linux motor.
- Tower System elevator modules (see [TWR-ELEV](#)).

4.3.1. TWR-MC-LV3PH module

The 3-Phase Low-Voltage Motor Control module (**TWR-MC-LV3PH**) is a peripheral Tower System module, interchangeable across the Tower System. The phase voltage and current feedback signals are provided. These signals enable a variety of algorithms to control the 3-phase PMSM and BLDC motors. A high level of board protection (over-current, under-voltage, over-temperature) is provided by the MC33937 pre-driver. Before you insert the TWR-MC-LV3PH module into the Tower System, ensure that the jumpers on your TWR-MC-LV3PH module are configured as follows:

Table 4. TWR-MC-LV3PH jumper settings

Jumper	Setting	Function
J2	1-2	Selects the internal analog power supply.
J3	1-2	Selects the internal analog power reference (GND).
J10	2-3	Selects BEMF_SENSE_C.
J11	2-3	Selects BEMF_SENSE_B.
J12	2-3	Selects BEMF_SENSE_A.
J13	2-3	Selects I_SENSE_DCB.
J14	2-3	Selects V_SENSE_DCB_HALF.

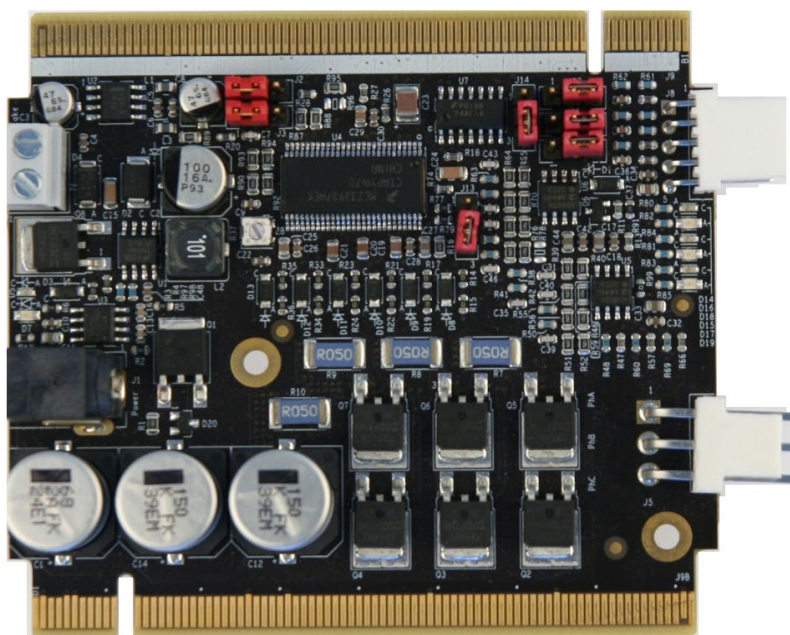


Figure 3. TWR-LV-MC3PH jumper settings

4.3.2. TWR-KV46F150M MCU module

Configure the jumpers on the TWR-KV46F150 and TWR-MC-LV3PH modules properly. [Table 7](#) lists the relevant jumpers and their settings for the TWR-KV46F150 MCU module:

Table 5. TWR-KV46F jumper settings

Jumper	Setting	Jumper	Setting	Jumper	Setting
J1	open	J16	open	J505	3-4
J2	open	J19	open	J506	3-4
J4	2-3	J20	1-2	J512	1-2
J5	1-2	J21	open	J514	2-3
J13	1-2, 3-4	J23	open	J517	2-3
J15	1-2	—	—	J519	3-4
				J520	1-2
				J521	1-2
				J522	1-2

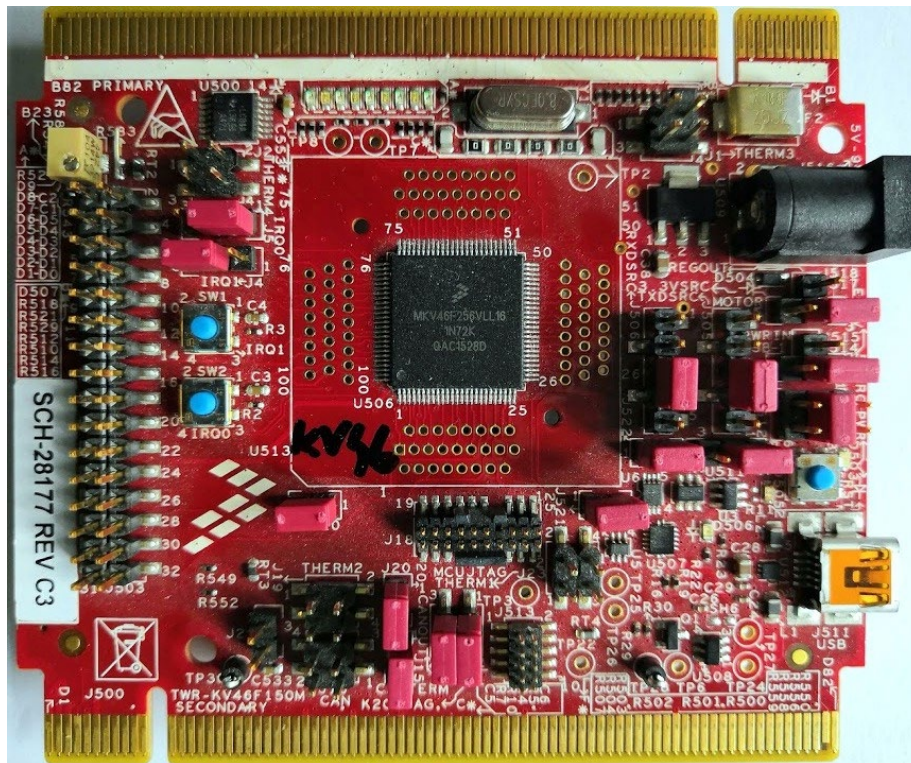


Figure 4. TWR-KV46F150M MCU module

4.3.3. TWR-KV58F Tower System module

The TWR-KV58F220M is a development module for the Kinetis KV5x family of MCUs built around the Arm® Cortex®-M7 core. This MCU has enough power for use in multi-motor control applications (such as the PMSM or BLDC motors with simple or advanced control techniques). The MCU has a wide range of motor-control peripherals, lots of memory (depending on the model used), and a powerful core.

To begin, configure the jumpers on the TWR-KV58F220M and TWR-MC-LV3PH Tower System modules properly. [Table 8](#) lists the specific jumpers and their settings for the TWR-KV58F220M Tower System module:

Table 6. TWR-KV58F jumper settings

Jumper	Setting	Jumper	Setting	Jumper	Setting
J1	1-2	J11	1-2	J23	2-3
J2	open	J12	1-2	J24	2-3
J3	1-2	J14	open	J25	2-3
J4	1-2	J17	open	J26	2-3
J7	1-2	J18	open	J28	1-2
J8	1-2	J19	open	J29	open
J9	open	J20	open	J30	1-2, 3-4, 5-6, 7-8
J10	1-2	J21	1-2	—	—

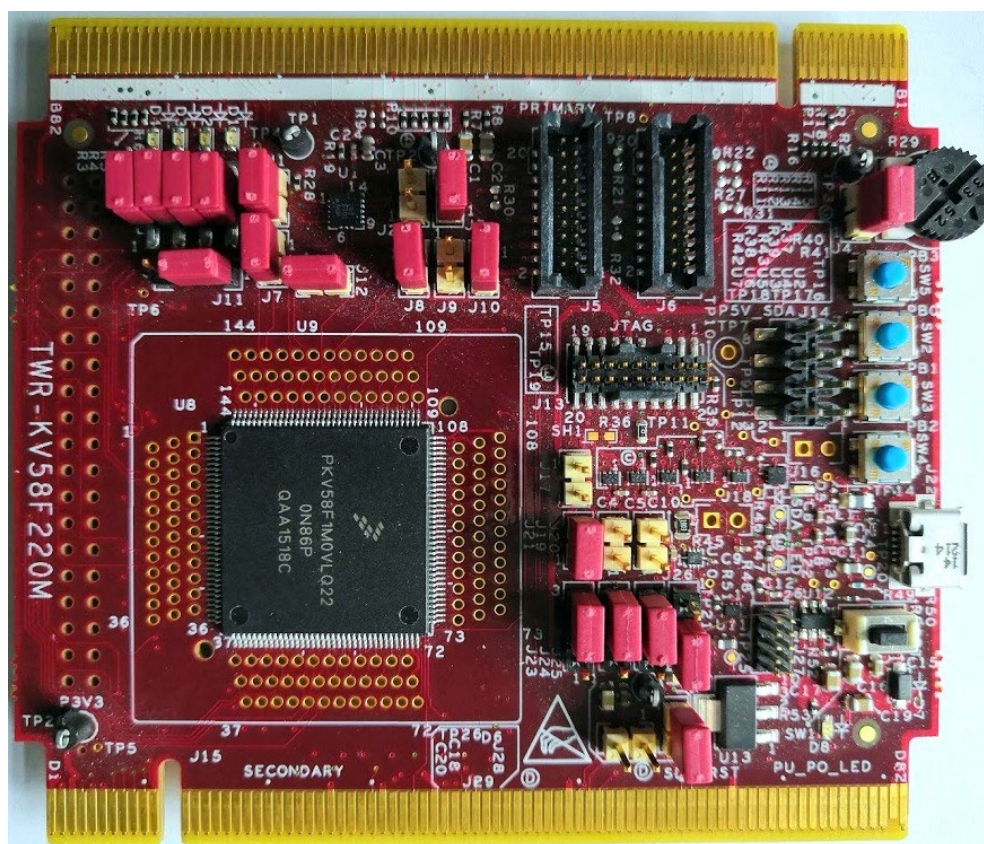


Figure 5. TWR-KV58F Tower System module

4.3.4. TWR-KE18F Tower System module

The TWR-KE18F is a development tool for the NXP Kinetis KE1x family of MCUs built around the Arm Cortex-M4 core. This MCU has enough power for use in motor-control applications (such as PMSM or BLDC motors with simple or advanced control techniques). The MCU has a wide range of peripherals, lots of memory (depending on the model used), and a powerful core.

To begin, configure the jumpers on the TWR-KE18F and TWR-MC-LV3PH Tower System modules properly. Table 9 lists the specific jumpers and their settings for the TWR-KE18F Tower System module.

Table 7. TWR-KE18F jumper settings

Jumper	Setting	Jumper	Setting	Jumper	Setting
J3	2-3	J9	1-2	J18	1-2
J4	1-2	J11	1-2	J19	1-2
J5	2-3	J12	1-2	J21	open
J6	1-2	J13	1-2	J22	1-2
J7	1-2	J16	1-2	J23	Open
J8	open	J17	1-2	J24	1-2

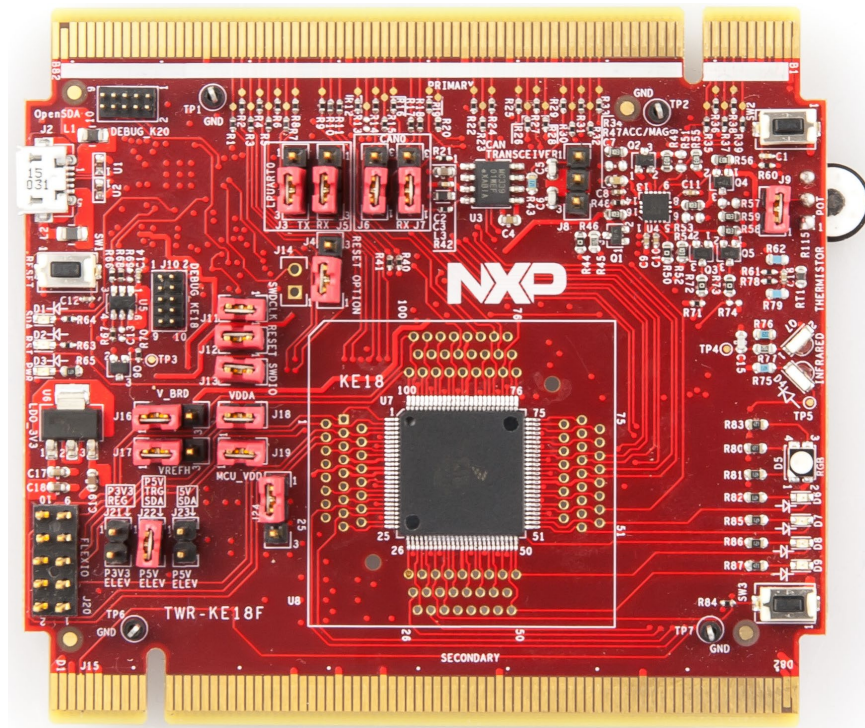


Figure 6. TWR-KE18F Tower System module

4.4. Tower System assembly

1. Insert the TWR-KVxxXxx MCU module and the TWR-MC-LV3PH module into the TWR-ELEV card slots. Ensure that the primary sides of the modules (marked by white stripes) are inserted into the primary elevator card (marked by white connectors).
2. After assembling the Tower System, connect the required cables as follows:

- Connect the power input cable (3-wire connector) of the Linux motor to its corresponding connector (J5) on the TWR-MC-LV3PH motor control driver board.
- Plug in the power supply cable that is attached to the TWR-MC-LV3PH system kit to the motor control peripheral board TWR-MC-LV3PH.
- Connect the TWR MCU module to the host PC via a USB cable.

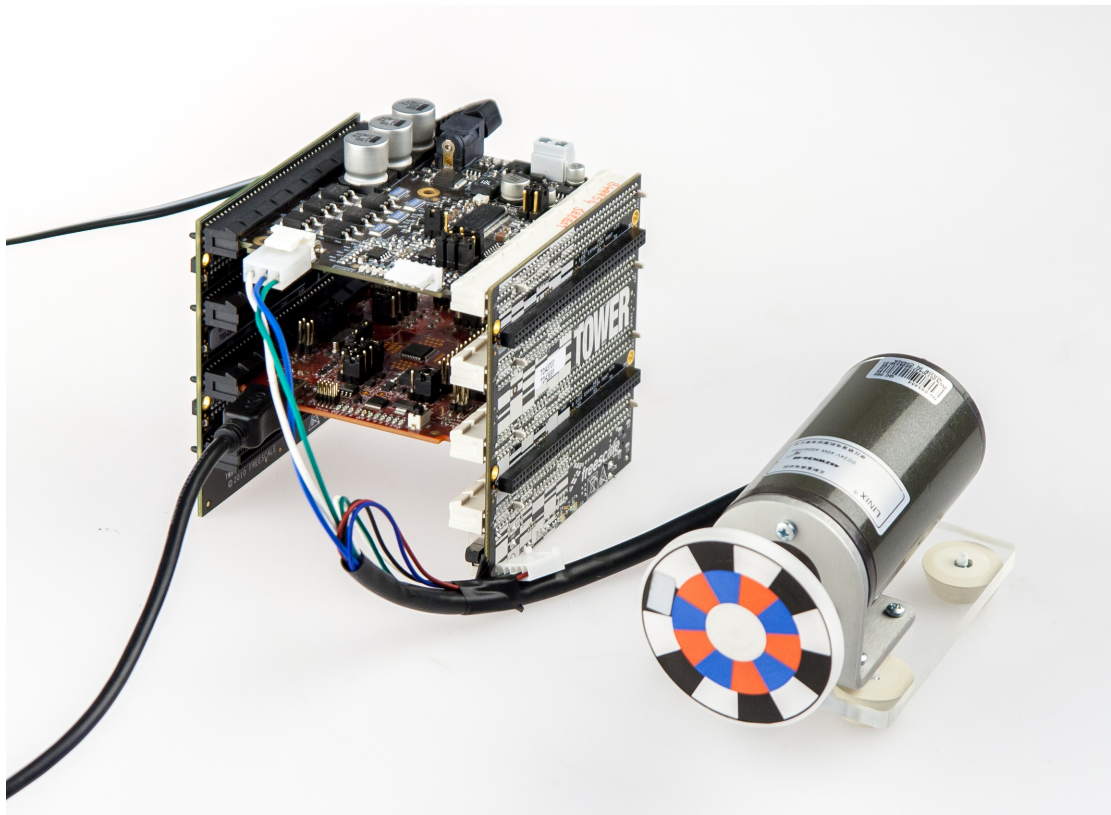


Figure 7. Assembled Tower System

4.5. Freedom development platform

To run the BLDC application using Freedom, you need these Freedom boards:

- Kinetis KV11Z Freedom board (see [FRDM-KV11Z](#)), Kinetis KV31F Freedom board (see [FRDM-KV31F](#)), Kinetis KE15Z, or Kinetis KE16Z Freedom board.
- 3-Phase Low-Voltage Power Freedom shield (see [FRDM-MC-LVBLDC](#)) including the Linux motor.

4.5.1. FRDM-MC-LVBLDC low-voltage evaluation board

The FRDM-MC-LVBLDC low-voltage evaluation board (in a shield form factor) effectively turns the Freedom development platform into a complete motor-control reference design compatible with the existing Freedom development platforms (FRDM-KV31F, FRDM-KV11Z, FRDM-KE15Z, and FRDM-KE16Z).

The FRDM-MC-LVBLDC board does not require any hardware configuration or jumper settings. It contains no jumpers.

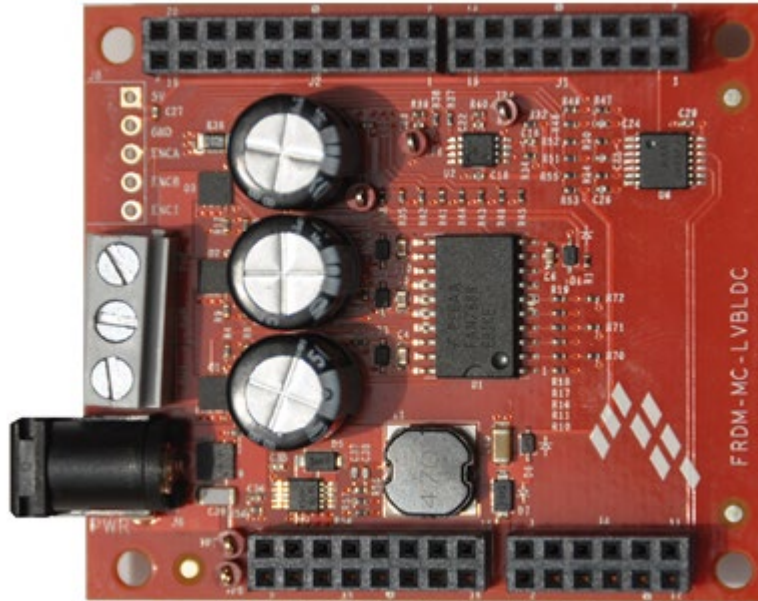


Figure 8. FRDM-MC-LVBLDC

4.5.2. FRDM-KV11Z board

The FRDM-KV11Z board is a low-cost development tool for the Kinetis V series KV1x MCU family built upon the Arm Cortex-M0+ processor. The FRDM-KV11Z board hardware is form-factor compatible with the Arduino R3 pin layout, providing a broad range of expansion board options. The FRDM-KV11Z platform features OpenSDA, the open-source hardware embedded serial and debug adapter running an open-source bootloader.

To begin, configure the jumpers on the FRDM-KV11Z Freedom System module properly. [Table 10](#) lists the specific jumpers and their settings for the FRDM-KV11Z Freedom System module.

Table 8. FRDM-K11Z jumper settings

Jumper	Setting
J10	1-2

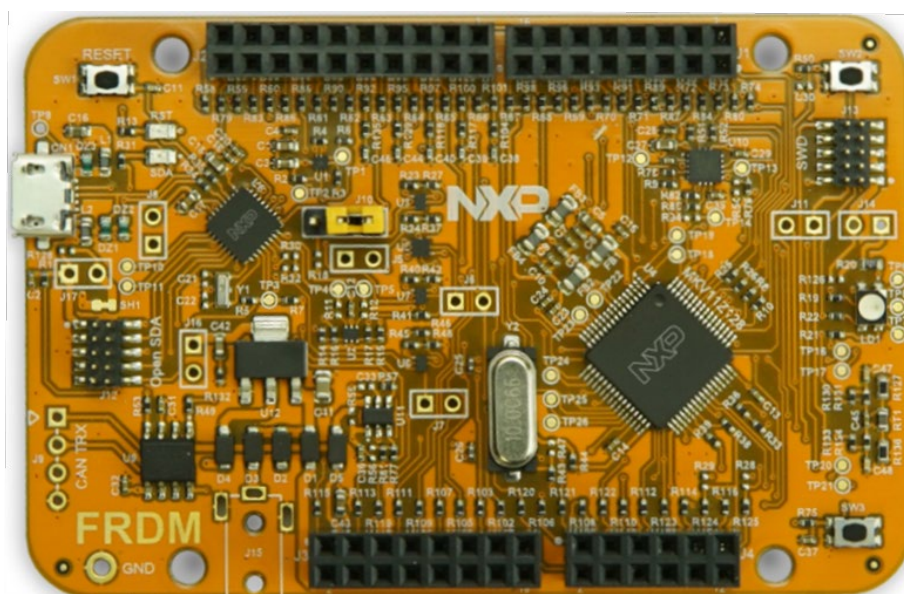


Figure 9. FRDM-KV11Z Freedom development board

4.5.3. FRDM-KV31F board

The FRDM-KV31F board is a low-cost development tool for the Kinetis V series KV3x MCU family built upon the Arm Cortex-M4 processor. The FRDM-KV31F board hardware is form-factor compatible with the Arduino R3 pin layout, providing a broad range of expansion board options, including FRDM-MC-LVPMSM and FRDM-MC-LVBLDC for PMSM and BLDC motor control.

The FRDM-KV31F platform features OpenSDA, the open-source hardware embedded serial and debug adapter running an open-source bootloader. This circuit offers several options for serial communication, flash programming, and run-control debugging.

The FRDM-KV31F board does not require any hardware configuration or jumper settings. It contains no jumpers.

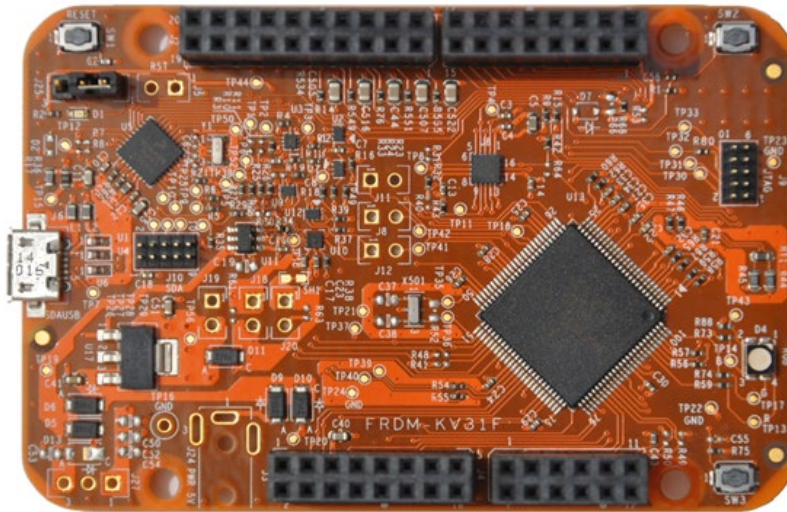


Figure 10. FRDM-KV31F Freedom development board

4.5.4. FRDM-KE15Z board

The FRDM-KE15Z is a low-cost development tool for Kinetis KE1x family of MCUs built around the Arm Cortex-M0+ core. The FRDM-KE15Z hardware is form-factor compatible with the Arduino R3 pin layout, providing a broad range of expansion board options. The FRDM-KE15Z platform features OpenSDA, the NXP open-source hardware embedded serial and debug adapter running an open-source bootloader.

To begin, configure the jumpers on the FRDM-KE15Z Freedom System module properly. [Table 11](#) lists the specific jumpers and their settings for the FRDM-KE15Z Freedom System module.

Table 9. FRDM-KE15Z jumper settings

Jumper	Setting	Jumper	Setting	Jumper	Setting
J7	1-2	J10	1-2	J15	2-3
J8	1-2	J14	1-2		

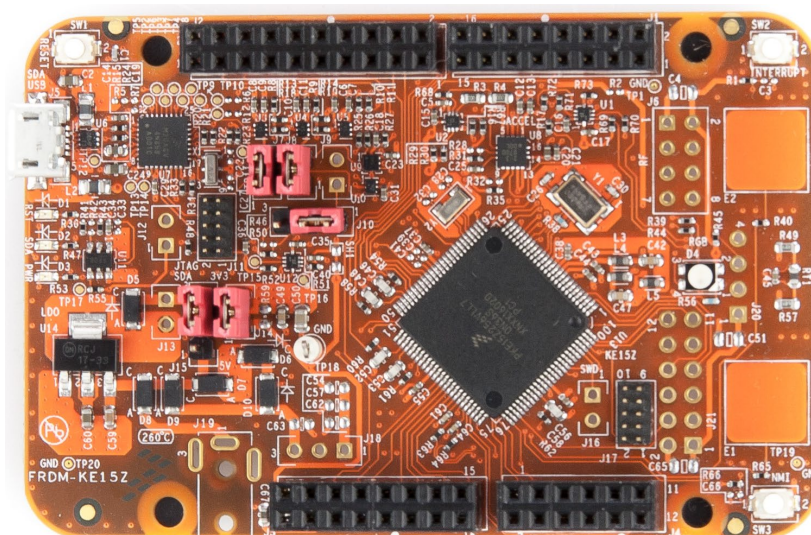


Figure 11. FRDM-KE15Z Freedom development board

4.5.5. FRDM-KE16Z board

The FRDM-KE16Z is a low-cost development tool for Kinetis KE1xZ family of MCUs built around the Arm Cortex-M0+ core. The FRDM-KE16Z hardware is form-factor compatible with the Arduino R3 pin layout, providing a broad range of expansion board options. The FRDM-KE16Z platform features OpenSDA, the NXP open-source hardware embedded serial and debug adapter running an open-source bootloader.

To begin, configure the jumpers and 0-Ω resistors on the FRDM-KE16Z Freedom System module properly. [Table 13](#) lists the specific jumpers and [Table 14](#) lists the 0-Ω resistor position settings for the FRDM-KE16Z Freedom System module.

Table 10. FRDM-KE16Z jumper setting

Jumper	Setting	Jumper	Setting	Jumper	Setting
J7	1-2	J10	1-2	J19	2-3
J8	1-2	J14	1-2	—	—

Table 11. FRDM-KE16Z O-Ω resistor setting

MCU signal	Resistor	Add/remove
PTB4/RGB_GREEN	R24	remove
PTB4/MC_PWM_CT	R25	add
PTB5/RGB_RED	R28	remove
PTB5/MC_PWM_CB	R29	add
PTC0/GES_R0	R110	remove
PTC0/MC_PWM_AT	R111	add
PTC1/GES_R1	R8	remove
PTC1/MC_PWM_AB	R13	add
PTD1/RGB_BLUE	R6	remove
PTD1/MC_PWM_BB	R9	add
PTC1/GES_R1_R6	R107	remove
PTC2/MC_CUR_DCB	R108	add
PTC0/GES_R0	R112	remove
PTB2/MC_VOLT_DCB	R113	add

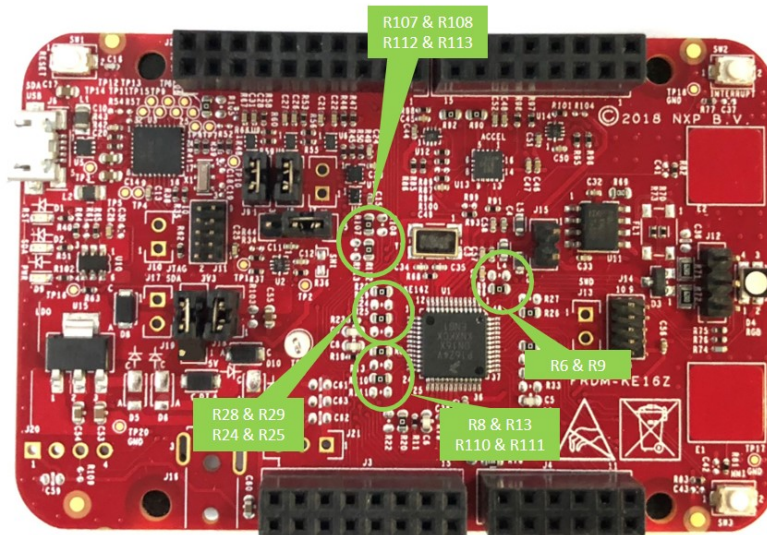


Figure 12. FRDM-KE16Z Freedom development board

4.5.6. Freedom development platform assembly

1. Connect the FRDM-MC-LVBLDC shield on top of the FRDM-KVxxx board.
2. Connect the BLDC motor 3-phase wires into the screw terminals on the board.
3. Plug in the USB cable from the USB host to the OpenSDA micro USB connector.
4. Plug in a 12 V DC power supply to the DC power jack.



Figure 13. Assembled Freedom system

4.6. High-Voltage Platform

To run the BLDC application within the High-Voltage Platform, you need these components:

- Kinetis KV31F High-Voltage Daughter Board ([HVP-KV31F512](#)), Kinetis KV46F High-Voltage Daughter Board ([HVP-KV46F150](#)), Kinetis KV58F220M High-Voltage Daughter Board ([HVP-KV58F220M](#)), or Kinetis KE18F High-Voltage Daughter Board ([HVP-KE18F](#)).
- High-Voltage Platform ([HVP-MC-3PH](#)) (motor not included).

Order all the modules of the High-Voltage Platform from www.nxp.com (or from distributors) and build the hardware platform for the target application easily.

5. Project file structure

The demo project folder (for example `boards\frdmkv11z\demo_apps\mc_bldc`) contains these folders and files:

- *IAR* folder—contains the configuration files for IAR Embedded Workbench® IDE. If IAR Embedded Workbench for Arm is installed on your computer, open the project using IAR IDE.
- *Project files*—contains the device-specific files. These files specify the peripheral initialization routines, motor definitions, and state machines. The source code contains a lot of comments. The functions of the particular files are explained in this list:
 - *ml_bldc_appconfig.h*—contains the definitions of constants for the application control processes (parameters of the motor and regulators and constants for the BLDC sensorless control-related algorithms).

- *main.c*—contains the basic application initialization (enabling interrupts), the subroutines for accessing the MCU peripherals, and the interrupt service routines.
- *mcdrv.h*—includes the specific *mcdrv_<board&MCU>.h* file into the project.
- *mcdrv_<board&MCU>.c*—contains the motor-control driver peripherals' initialization functions specific to the board and MCU used.
- *mcdrv_<board&MCU>.h*—header file for *mcdrv_<board&MCU>.c*. This file contains the macros for changing the PWM period and ADC channels assigned to the back-EMF voltages and the board voltage and current.
- *pin_mux.c*—contains the board initialization function to configure the pin routing. This file is generated by the Pins tool.
- *pin_mux.h*—header file for *pin_mux.c*.
- *board.c*—common MCUXpresso SDK file containing the initialization of a debug console.
- *board.h*—common MCUXpresso SDK file containing the macros for a specific board pinout.
- *clock_config.c*—contains the MCU clock configuration functions.
- *clock_config.h*—header file for *clock_config.c*.
- *readme.txt*—basic information about the requirements, settings, and the demo.

The motor-control folder `<KSDK_install_folder>\middleware\motor_control\bldc` contains these common source and header files used in all motor-control projects. The folder contains the subfolders common to the entire project in this package:

- *mc_algorithms*—contains the control algorithms used to control the BLDC motor.
- *mc_drivers*—contains the source and header files used to initialize and run motor-control applications.
- *mc_state_machine*—contains the software routines that are executed when the application is in a particular state or state transition.
- *state_machine*—contains the state machine functions for the Fault, Initialization, Stop, and Run states.

Each motor-control project is based on RTCESL (Real-Time Control Embedded Software Library) placed in the `<KSDK_install_folder>\middleware` folder. The library contains the mathematical functions used in the project. It contains the library subfolders for specific cores (“*cm0*”, “*cm4*”, and “*cm7*”). This subfolder includes the required header files and library files used in the project. The *RTCESL* folder is taken from the RTCESL release 4.5, and it is fully compatible with the official release. The library names are changed for easier use with the available IDEs. See www.nxp.com/rtcesl for more information about RTCESL.

6. User Interface

The application contains the demo application mode to demonstrate the motor rotation. Operate it using the user button. The Tower System and Freedom boards include a user button associated with the port interrupt (generated whenever one of the buttons is pressed). At the beginning of the ISR, a simple logic executes, and the interrupt flag clears. When you press the SW2 button, the demo mode starts; when you press the same button again, the application stops and transitions back to the STOP state. There is also an LED indication of the current application state. The green continuous LED indicates that the application is in the RUN state, the flashing LED indicates the FAULT state, and the LED off (or red LED) indicates the STOP state.

Control the application using the buttons on the NXP Kinetis V Tower System and Freedom development boards. Because the HVP platform does not provide any push-buttons to control the application, the demo mode runs automatically after the HVP board is switched on.

6.1. Control button

Pressing the control button switches the demo mode on (or switches the demo mode off if it is currently switched on). [Table 14](#) shows the correct switch button for your development board.

Table 12. Control button assignment

Board	Control button	LED state indication
TWR-KV46F150M	SW2	D5
TWR-KV58F220M	SW2	D5
TWR-KE18F	SW2	D5
FRDM-KV11Z	SW2	D4
FRDM-KV31F	SW2	D4
FRDM-KE15Z	SW2	D4
FRDM-KE16Z	SW2	—
HVP-KV31F	—	D20
HVP-KV46F	—	D20
HVP-KV58F	—	D20
HVP-KE18F	—	D20

6.2. Remote control using FreeMASTER

Remote operation is provided by the FreeMASTER software via the USB interface. FreeMASTER 3.0 is required for optimal operation of the application. The FreeMASTER 3.0 application installation is available for download at www.nxp.com/freemaster.

Perform these steps to control a BLDC motor using FreeMASTER:

1. Open the FreeMASTER project file (*bldc.pmp*) in the `<sdk_package_folder>middleware/motor_control/freemaster` folder.
2. Click the communication button (the green “GO!” button in the top left-hand corner) to establish the communication.

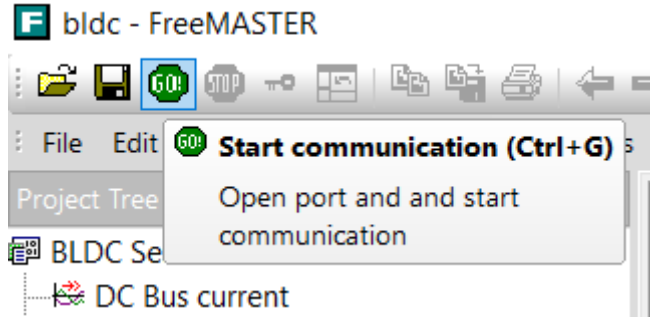


Figure 14. Green "GO!" button in top left hand corner

When the communication is successfully established, the FreeMASTER communication status in the bottom right-hand corner should change from “Not connected” to “RS232 UART Communication; COMxx; speed=115200”. When the communication setup fails, a FreeMASTER warning pop-up window appears.



Figure 15. FreeMASTER communication status when communication is established successfully

3. Control the BLDC motor using the control page.

If the communication setup fails, perform these troubleshooting steps:

1. Go to the “Project->Options->Comm” tab and make sure that “COM_ALL” is set in the “Port” option and the communication speed is set to 115200 bps.

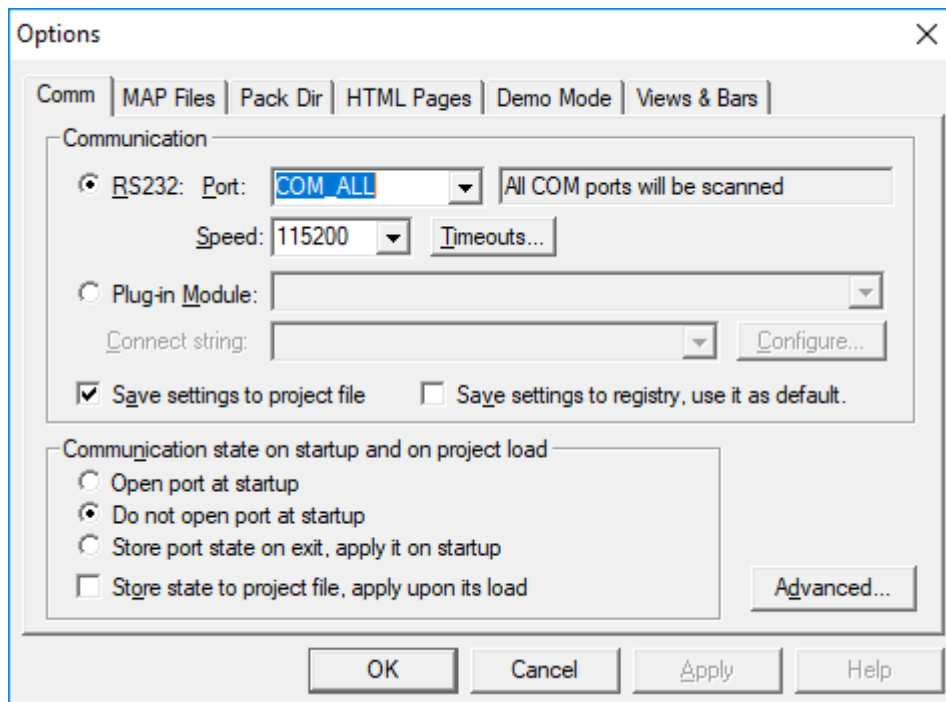


Figure 16. FreeMASTER communication setup window

- When “OpenSDA-CDC Serial Port” is not displayed in the message window next to the “Port” drop-down menu, unplug and plug in the USB cable and reopen the FreeMASTER project again.
- Make sure that your development board is supplied by a sufficient power source. Sometimes the USB PC port does not have sufficient power to supply the development board.

6.2.1. FreeMASTER TSA and user variables addition to FreeMASTER watch

By default, all projects use the TSA (Target Side addressing). This means that the information about the variables’ address and size are stored in the MCU flash memory. The TSA feature may be enabled or disabled by the `BOARD_FMSTR_USE_TSA` macro in the `board.h` file. Only the variables necessary for the MCAT functionality are stored in the TSA and visible in FreeMASTER. If you want to monitor your own variables, provide a symbol file which contains the information about the addresses of all variables in the project to FreeMASTER. The symbol files are generated during the build process to the `boards/demo_apps/mc_bldc/<compiler>/<debug or release>` folder. The symbol files have different extensions for different compilers (IAR generates `*.out`, Keil and MCUXpresso generate `*.axf`). For more information about the TSA, see *FreeMASTER Serial Communication Driver* (document [FMSTRSCIDRVUG](#)).

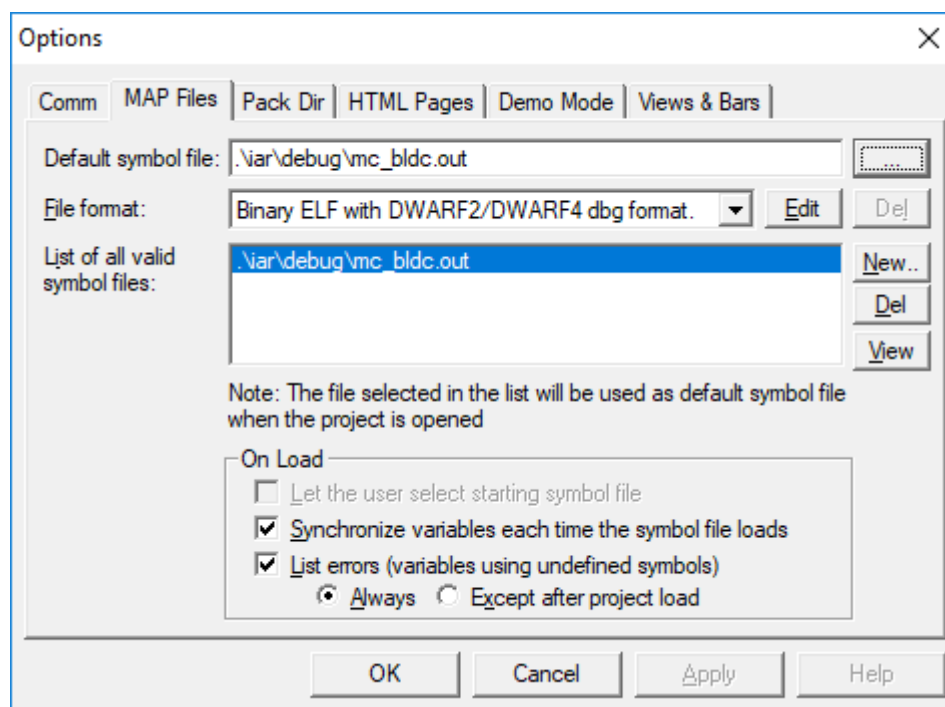


Figure 17. FreeMASTER symbol file selection

6.2.2. Control page

After launching the application and performing all necessary settings, control the BLDC motor using the FreeMASTER control page. The FreeMASTER control page contains:

- Speed gauge—shows the actual and required speeds.

- Speed slider—sets the required speed.
- DC-bus voltage gauge—shows the actual DC-bus voltage.
- DC-bus current gauge—shows the actual DC-bus current.
- DC-bus current limitation slider—sets up the DC-bus current limit.
- Demo mode button—turns the demonstration mode on/off.
- STOP button—stops the whole application.
- Application State Notification—shows the actual application state and faults.

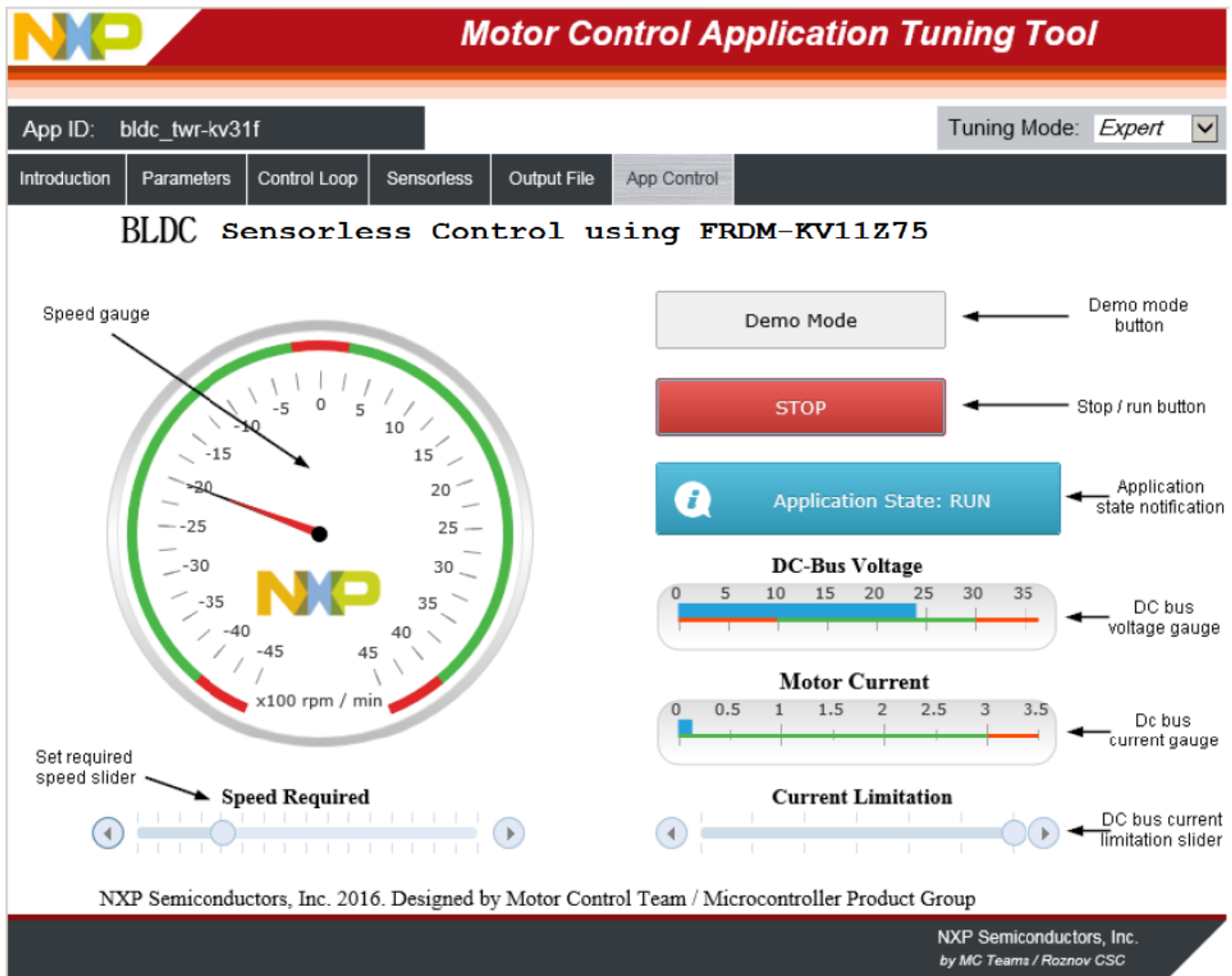


Figure 18. FreeMASTER control page

The MCAT tuning tool plug-in module is in the FreeMASTER GUI. This tool is targeted at motor-control applications, where you can change the motor-control parameters or adjust the start-up and control parameters. Each tab represents one submodule of the embedded-side control, and tunes its parameters. For more information, see *Sensorless BLDC Control on Kinetis KV* (document AN4642).

Here are the basic instructions:

- To start the motor, set up the required speed using the speed slider.

- In case of a fault, click on the fault notification to clear the fault.
- Click the “Demo Mode” button to turn the demonstration mode on/off.
- Click the “STOP” button to stop the motor.

7. Instructions

7.1. Running the motor

1. Assemble your NXP motor control hardware
2. Download the correct project into your target using the OpenSDA debug interface.
3. Open the FreeMASTER project, establish the communication between MCU and PC
4. Set up the required speed of the motor on the speed slider on the FreeMASTER control page.

7.2. Stopping the motor

1. Click on the Stop button on the FreeMASTER control page.
2. Require zero speed with using speed slider.
3. In emergency cases, turn off power supply.

7.3. Clearing a fault

To clear a fault click on the CLEAR FAULT button on the control page.

7.4. Turning on demonstration mode

1. If you use the FreeMASTER control page, click the “Demo” button.
4. If you do not use the FreeMASTER control page push the corresponding button on your development board to turn demonstration mode on/off.

8. Acronyms and abbreviations

Table 13. Acronyms and abbreviations

Term	Meaning
AN	Application Note
BLDC	Brushless DC motor
DRM	Design Reference Manual
MCU	Microcontroller
MSD	Mass Storage Device

9. References

See these documents at www.nxp.com:

1. [Embedded Software Libraries User's Guides](#)
2. *3-Phase BLDC Sensorless Motor Control Application* (document [DRM144](#))
3. *Sensorless BLDC Control on Kinetis KV* (document [AN5263](#))
4. *Getting Started with MCUXpresso SDK* (document [MCUXSDKGSUG](#))

10. Revision history

Table 14. Revision history

Revision number	Date	Substantive changes
0	07/2016	Initial release.
1	03/2017	Updated the document with information about FRDM-KV11Z and the MCUXpresso IDE.
2	09/2017	Updated the document with information about the HVP platform.
3	10/2018	Added FRDM-KE16Z and removed KDS.
4	05/2019	Added FreeMASTER control, updated TWR-KV46 and TWR-KV58 board figures, removed KV10 references.
5	03/2020	Deleted the sections about the TWR-KV11 and TWR-KV31 boards. These boards are not supported in the SDK.
6	06/2020	Updated the FreeMASTER project file path.

How to Reach Us:

Home Page:

www.nxp.com

Web Support:

www.nxp.com/support

Information in this document is provided solely to enable system and software implementers to use NXP products. There are no express or implied copyright licenses granted hereunder to design or fabricate any integrated circuits based on the information in this document. NXP reserves the right to make changes without further notice to any products herein.

NXP makes no warranty, representation, or guarantee regarding the suitability of its products for any particular purpose, nor does NXP assume any liability arising out of the application or use of any product or circuit, and specifically disclaims any and all liability, including without limitation consequential or incidental damages. "Typical" parameters that may be provided in NXP data sheets and/or specifications can and do vary in different applications, and actual performance may vary over time. All operating parameters, including "typicals," must be validated for each customer application by customer's technical experts. NXP does not convey any license under its patent rights nor the rights of others. NXP sells products pursuant to standard terms and conditions of sale, which can be found at the following address:

www.nxp.com/SalesTermsandConditions.

While NXP has implemented advanced security features, all products may be subject to unidentified vulnerabilities. Customers are responsible for the design and operation of their applications and products to reduce the effect of these vulnerabilities on customer's applications and products, and NXP accepts no liability for any vulnerability that is discovered. Customers should implement appropriate design and operating safeguards to minimize the risks associated with their applications and products.

NXP, the NXP logo, NXP SECURE CONNECTIONS FOR A SMARTER WORLD, COOLFLUX, EMBRACE, GREENCHIP, HITAG, I2C BUS, ICODE, JCOP, LIFE VIBES, MIFARE, MIFARE CLASSIC, MIFARE DESFire, MIFARE PLUS, MIFARE FLEX, MANTIS, MIFARE ULTRALIGHT, MIFARE4MOBILE, MIGLO, NTAG, ROADLINK, SMARTLX, SMARTMX, STARPLUG, TOPFET, TRENCHMOS, UCODE, Freescale, the Freescale logo, Altivec, C-5, CodeTEST, CodeWarrior, ColdFire, ColdFire+, C-Ware, the Energy Efficient Solutions logo, Kinetis, Layerscape, MagniV, mobileGT, PEG, PowerQUICC, Processor Expert, QorIQ, QorIQ Qonverge, Ready Play, SafeAssure, the SafeAssure logo, StarCore, Symphony, VortiQa, Vybrid, Airfast, BeeKit, BeeStack, CoreNet, Flexis, MXC, Platform in a Package, QUICC Engine, SMARTMOS, Tower, TurboLink, and UMEMS are trademarks of NXP B.V. All other product or service names are the property of their respective owners. AMBA, Arm, Arm7, Arm7TDMI, Arm9, Arm11, Artisan, big.LITTLE, Cordio, CoreLink, CoreSight, Cortex, DesignStart, DynamIQ, Jazelle, Keil, Mali, Mbed, Mbed Enabled, NEON, POP, RealView, SecurCore, Socrates, Thumb, TrustZone, ULINK, ULINK2, ULINK-ME, ULINK-PLUS, ULINKpro, µVision, Versatile are trademarks or registered trademarks of Arm Limited (or its subsidiaries) in the US and/or elsewhere. The related technology may be protected by any or all of patents, copyrights, designs and trade secrets. All rights reserved. Oracle and Java are registered trademarks of Oracle and/or its affiliates. The Power Architecture and Power.org word marks and the Power and Power.org logos and related marks are trademarks and service marks licensed by Power.org.

© 2020 NXP B.V.

Document Number: BLDCDEMOUG
Rev. 6
06/2020

